

The ESDCD 4 Pillars Project

WHY IS GOOD ATTENDANCE IMPORTANT?

Beginning in kindergarten and even preschool, chronic absence can predict lower third grade reading scores. By middle and high school, chronic absence is a proven early warning sign of high school dropout for all students, regardless of their socioeconomic status.

WHY NOW?

Every School Day Counts Detroit (ESDCD) Coalition's and its partners' goal is to help decrease Detroit's 58% chronic absence to 15% by 2027.

WHY THIS PROJECT?

ESDCD has been supporting various schools across the city of Detroit to be better equipped to address increased attendance. Through this project, we are activating the technical assistance, communications, wraparound, and research pillars in an integrated framework of support to impact school attendance.

This project has been made possible through the Skillman Foundation's investment in education, and in support of increased school attendance for all children in Detroit.

WHAT IT IS: an effort to deepen ESDCD's integrated work into five schools partnering with them to grow strong attendance

We envision that the five selected schools will increase their student attendance as a result of working from the integrated efforts of the ESDCD pillars to develop and mobilize attendance strategy and supports.

GOAL to provide school leaders and teams with relevant supports for:

- a messaging campaign around attendance
- technical assistance for attendance strategies and research-based practice implementation
- wraparound supports and services to address barriers to attendance
- all based on current national and local research and focused on advocacy at the systems-level

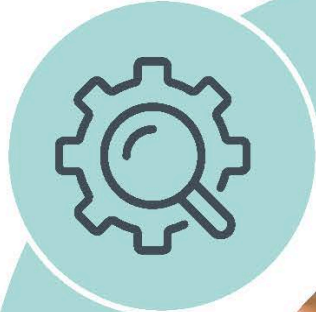
BENEFITS for Schools:

- Help you integrate attendance efforts into the existing school improvement plan and structures
- Provide additional capacity and supports to assess and address needs
- Serve as strategic partners for developing and mobilizing attendance efforts

ESDCD Pillars and Leads

- **Technical Assistance:** ESDCD/AW (Emma Herdean and Ines De Jesus), and 313READS (Dr. Leah van Belle for Early Childhood Education supports)
- **Communications:** Brightmoor Alliance (Rev. Larry Simmons and Ephraim Clark)
- **Wraparound:** Urban Neighborhood Initiatives (Christine Bell and Alejandra Gomez)
- **Research:** Wayne State University's Detroit Education Research Partnership (Dr. Sarah Winchell Lenhoff)

RESEARCH
 Continuous improvement approach to understanding barriers to attendance and testing potential solutions across educational and community ecosystems.



COMMUNICATIONS
 Multi-directional exchange of information with persons exercising power and implementing policy from the individual to macro level.



TECHNICAL ASSISTANCE
 Develop the capacity of all stakeholders to improve practice around attendance and engagement toward academic success.



WRAPAROUND SUPPORTS
 Remove barriers at the micro level and create opportunities for students and their families to re-engage in school.



RESULTS:

SYSTEMS CHANGE



IMPROVED ATTENDANCE



BETTER ENGAGEMENT

